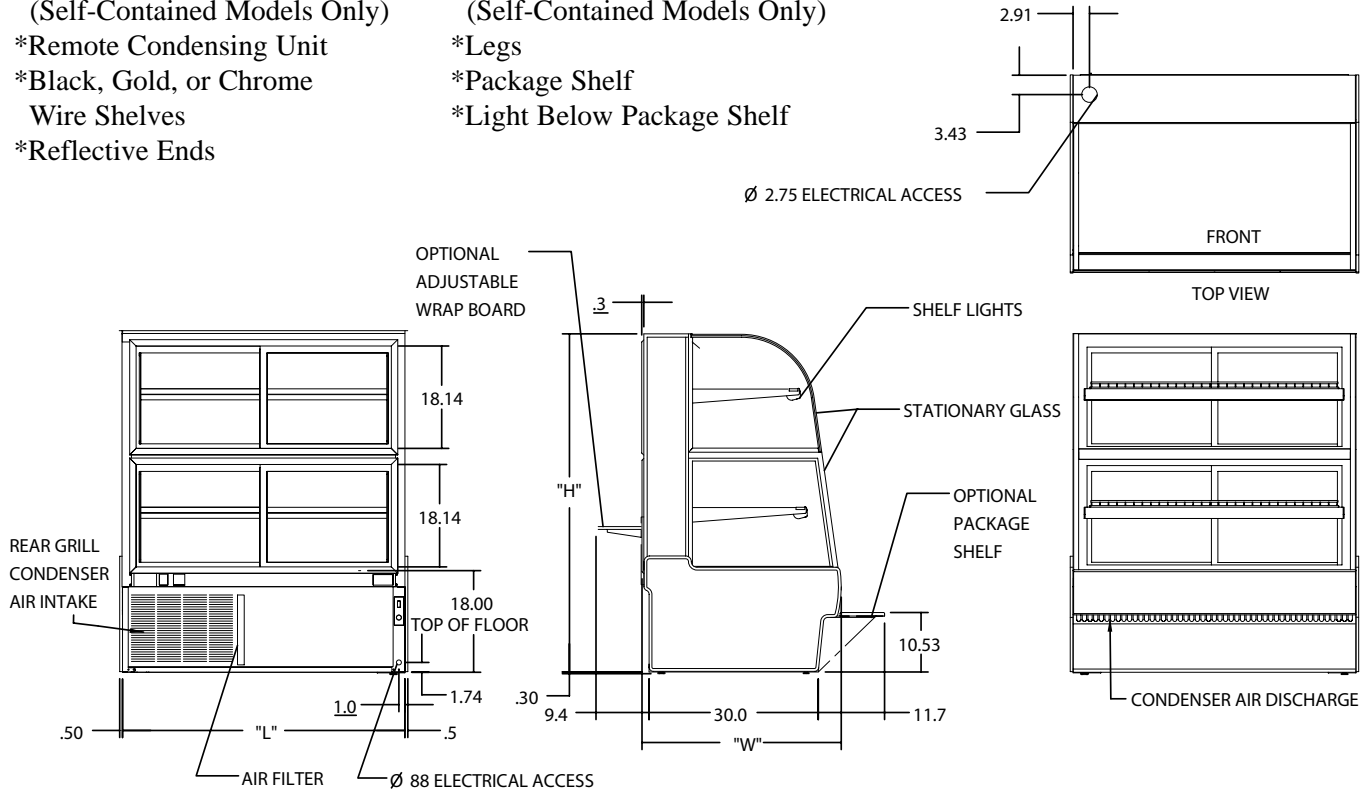


CURVED GLASS HORIZONTAL DUAL ZONE CASE

OPTIONAL ACCESSORIES:

- *Special Base Finish
- *Glass Shelves
- *Rear Wrapping Board
- *Cord & Plug
(Self-Contained Models Only)
- *Remote Condensing Unit
- *Black, Gold, or Chrome
Wire Shelves
- *Reflective Ends
- *White or Mirrored Interior Ends
With Laminated Exterior
- *Reflective Rear Doors
- *Casters/Cord & Plug Included
(Self-Contained Models Only)
- *Legs
- *Package Shelf
- *Light Below Package Shelf



SPECIFICATIONS:

Model	Dimensions			Self-Contained 120/60/1	Remote 120/60/1
	L	W	H		
CGR3660DZH	36.13"	35.31"	60"	1/3 HP - 9.0 AMPS	2.3 AMPS
CGR5060DZH	50.13"	35.31"	60"	1/2 HP - 10.5 AMPS	2.3 AMPS
CGR5960DZH	59.13"	35.31"	60"	1/2 HP - 11.6 AMPS	2.5 AMPS
CGR7760DZH	77.13"	35.31"	60"	3/4 HP - 14.2 AMPS	3.3 AMPS

- Refrigerated cases are designed to operate in a maximum environment of 75° ambient and 55% relative humidity.
- Due to continuing engineering improvements, specifications are subject to change without notice.



Look to Federal for Innovative Merchandising



a Standex company

Federal Industries
A Standex Company
215 Federal Avenue
Belleville WI 53508-0290
Phone: 800-356-4206
Fax: 608-424-3234
Email: geninfo@federalind.com
Web Site: www.federalind.com